

GB-INWAVP

In-wall A/V and Power GearBox™

Color: White

Weight	3.00 lb. 1.4 kg
Width	9.50 in. 241 mm
Height	6.19 in. 157.2 mm
Depth	4.00 in. 102 mm

Downloads at Mounts.com

 [BID SPEC](#)



[Data Sheet](#)



[Bid Specification Document](#)



[Installation Manual](#)



[Dimensional Drawing](#)



[CAD File](#)



[High Resolution Image](#)



+6.19



4 in

DESCRIPTION

The In-Wall Cable and Power GearBox™ (GB-INWAVP) works well with all Premier flat-panel mounts and is easily installed into a drywall surface. It can be installed anywhere on the wall with no need for stud placement due to unique mounting brackets.

FEATURES

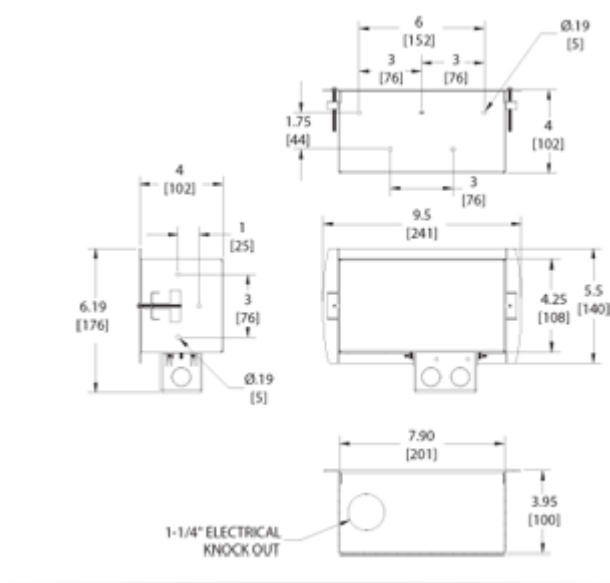
- Easy Installation and placement
- Can install in drywall - No need for dedicated pre-construction stud placement
- Mounts vertically or horizontally
- Includes UL approved junction box
- Ideal for IPM-700 iPad mounting frames

**LIFETIME
WARRANTY**

GB-INWAVP

In-wall A/V and Power GearBox™

DOWNLOAD FULL SIZE CAD FILES AND DIMENSIONAL DRAWINGS AT MOUNTS.COM



RELATED PRODUCTS FOR GB-INWAVP



P4263T
Tilting Low-Profile Mount for Flat-Panels up to 175 lb./80 kg



AM175
Swingout Mount for Flat-Panel Displays up to 175 lb./80 kg



P2642T
Tilting Low-Profile Mount for Flat-Panels up to 130 lb. /59kg



P4263F
Low-Profile Mount for Flat-Panels up to 175 lb./80kg



PTFM3765
Ultra-Thin Mount for Flat-Panels up to 68 inch

MORE AT MOUNTS.COM

SIMILAR PRODUCTS



GB-INWAVP
In-wall A/V and Power GearBox™



GB-INWAVPB
In-wall A/V and Power GearBox™

MORE AT MOUNTS.COM

